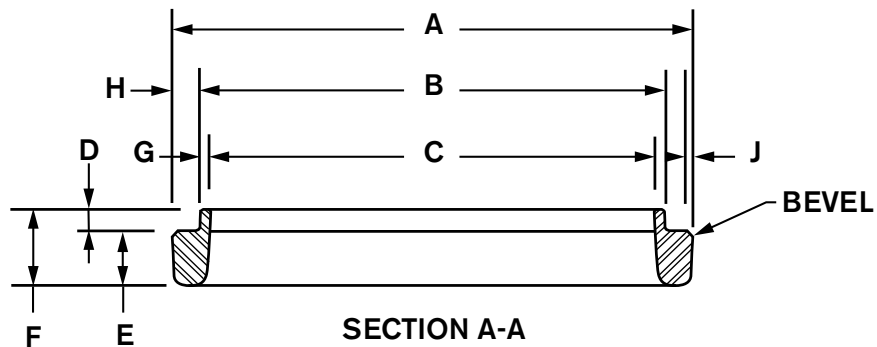
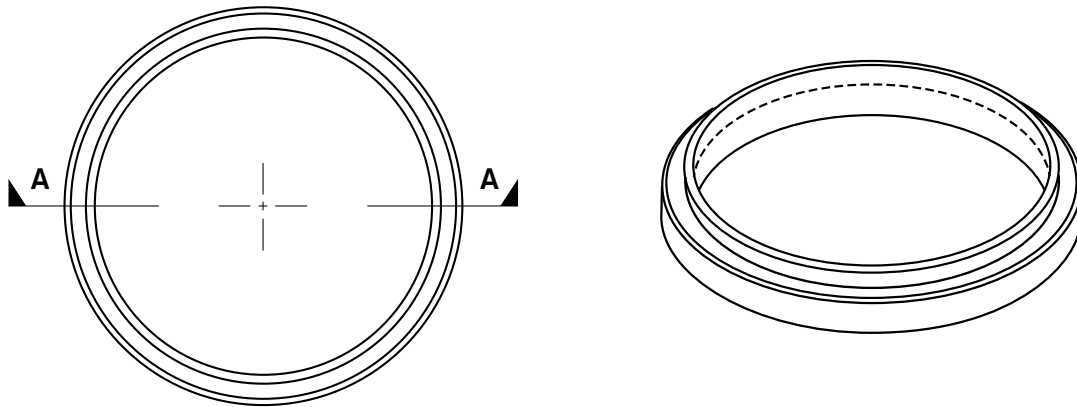


# INSIDE CUTTING SHOE

## CS7714

**MATERIAL: CAST STEEL**  
 ASTM A148 90/60 Heat Treated  
 Normal foundry tolerences apply



OD	A	B	C	D	E
14"	14"	12 3/4"	11 3/4"	3/4"	2"

F	G	H	J	wt
2 3/4"	1/2"	5/8"	3/8"	27#

### ***Attachment Procedure***

1. Hold cutting shoe in close contact with the end of pile.
2. Place a 5/16" partial penetration single-bevel groove weld along the entire circumference of the pile/shoe interface utilizing an E70XX welding rod or equivalent filler material.



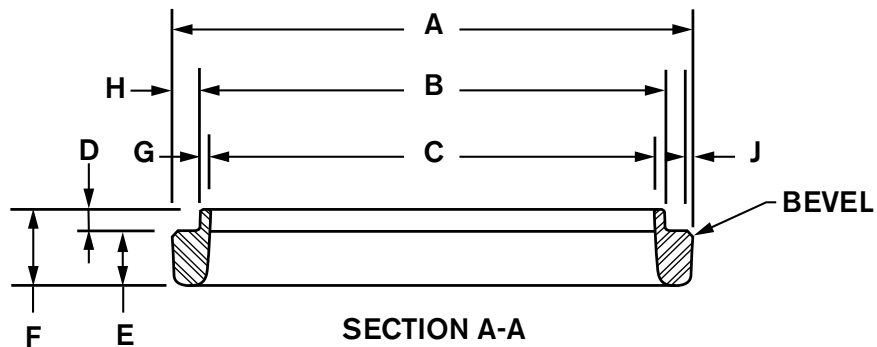
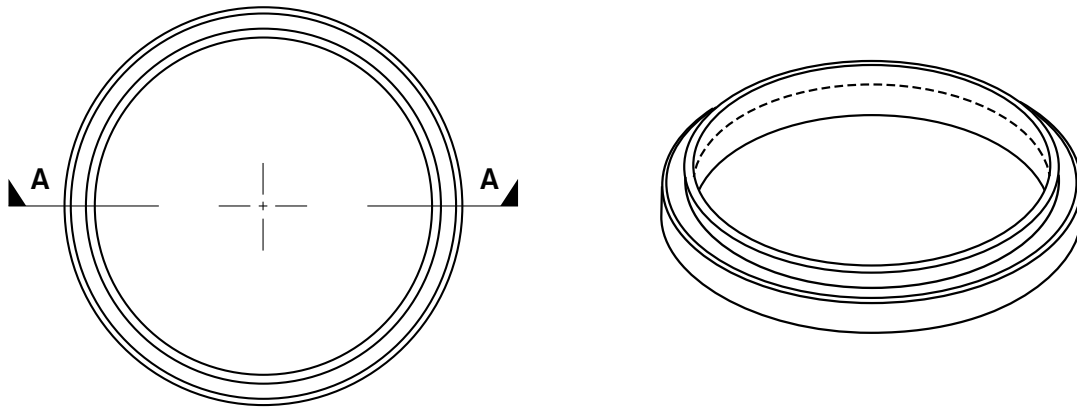
**ASSOCIATED PILE  
& FITTING**

45 Samworth Road, Clifton, NJ 07014  
 Tel: 973-773-8400  
 Fax: 973-773-8442  
 email: [apf@associatedpile.com](mailto:apf@associatedpile.com)  
[www.associatedpile.com](http://www.associatedpile.com)  
 Call Toll Free: 800-526-9047

# INSIDE CUTTING SHOE

## CS7718

**MATERIAL: CAST STEEL**  
 ASTM A148 90/60 Heat Treated  
 Normal foundry tolerences apply



OD	A	B	C	D	E
18"	18"	16 1/2"	15 1/2"	3/4"	2"

F	G	H	J	wt
2 3/4"	1/2"	3/4"	3/8"	42#

### ***Attachment Procedure***

1. Hold cutting shoe in close contact with the end of pile.
2. Place a 5/16" partial penetration single-bevel groove weld along the entire circumference of the pile/shoe interface utilizing an E70XX welding rod or equivalent filler material.



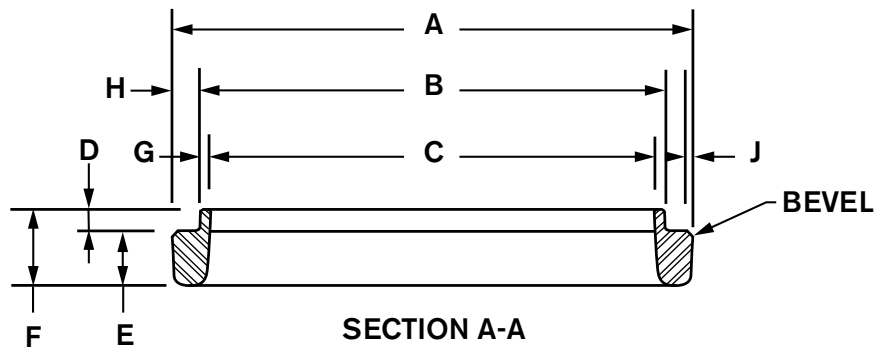
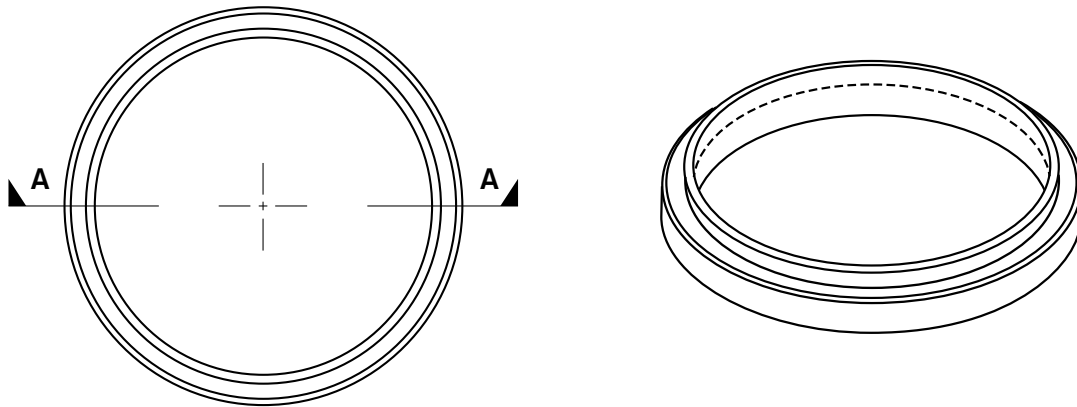
**ASSOCIATED PILE  
& FITTING**

45 Samworth Road, Clifton, NJ 07014  
 Tel: 973-773-8400  
 Fax: 973-773-8442  
 email: [apf@associatedpile.com](mailto:apf@associatedpile.com)  
[www.associatedpile.com](http://www.associatedpile.com)  
 Call Toll Free: 800-526-9047

# INSIDE CUTTING SHOE

## CS7730

**MATERIAL: CAST STEEL**  
 ASTM A148 90/60 Heat Treated  
 Normal foundry tolerences apply



OD	A	B	C	D	E
30"	30"	27 1/2"	26 3/8"	3/4"	2 1/4"

F	G	H	J	wt
3"	7/16"	1 1/4"	3/8"	102#

### ***Attachment Procedure***

1. Hold cutting shoe in close contact with the end of pile.
2. Place a 5/16" partial penetration single-bevel groove weld along the entire circumference of the pile/shoe interface utilizing an E70XX welding rod or equivalent filler material.



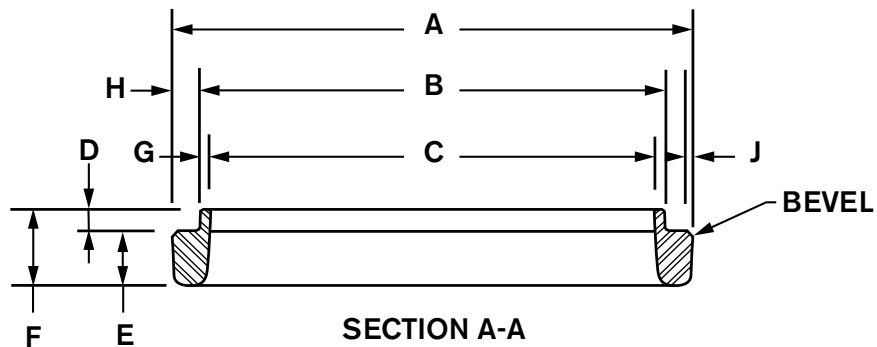
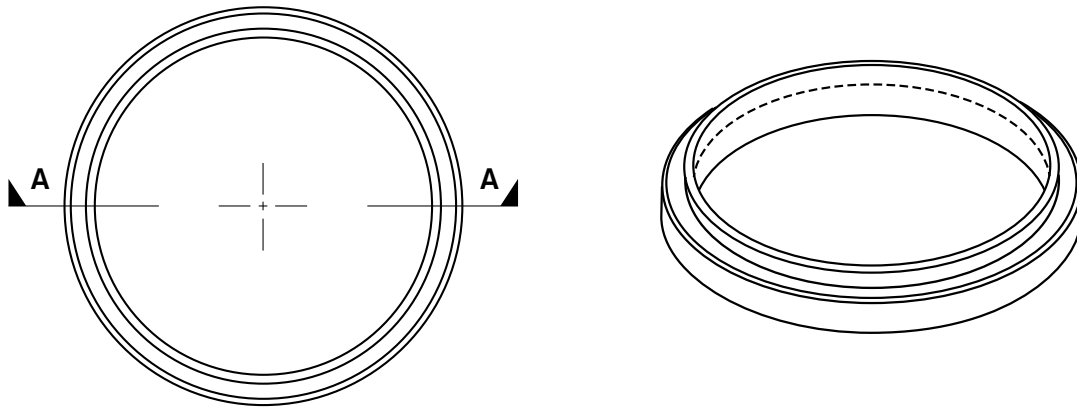
**ASSOCIATED PILE  
& FITTING**

45 Samworth Road, Clifton, NJ 07014  
 Tel: 973-773-8400  
 Fax: 973-773-8442  
 email: [apf@associatedpile.com](mailto:apf@associatedpile.com)  
[www.associatedpile.com](http://www.associatedpile.com)  
 Call Toll Free: 800-526-9047

# INSIDE CUTTING SHOE

## CS7736

**MATERIAL: CAST STEEL**  
 ASTM A148 90/60 Heat Treated  
 Normal foundry tolerences apply



OD	A	B	C	D	E
36"	36"	33 3/4"	32 3/4"	3/4"	2 1/2"

F	G	H	J	wt
3 1/4"	1/2"	1 1/8"	3/8"	122#

### ***Attachment Procedure***

1. Hold cutting shoe in close contact with the end of pile.
2. Place a 5/16" partial penetration single-bevel groove weld along the entire circumference of the pile/shoe interface utilizing an E70XX welding rod or equivalent filler material.



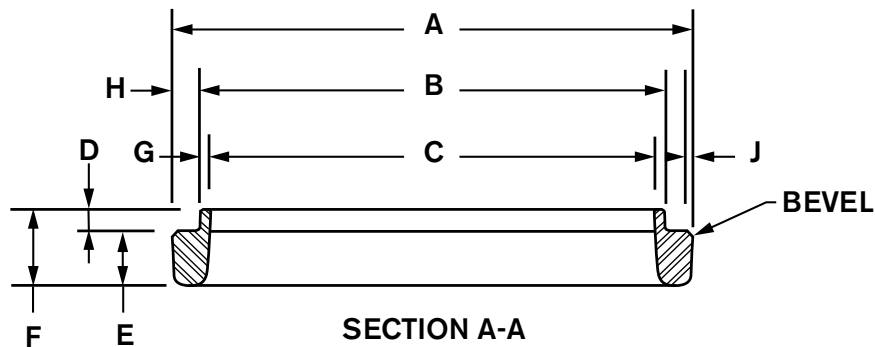
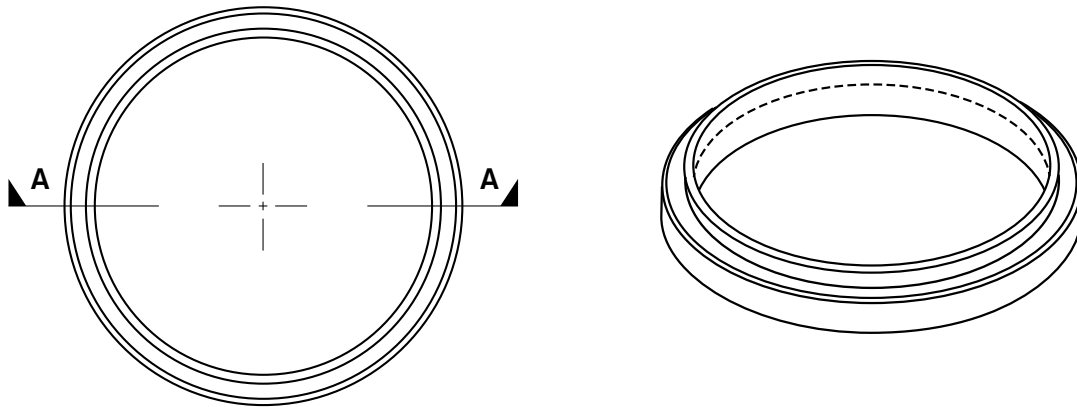
**ASSOCIATED PILE  
& FITTING**

45 Samworth Road, Clifton, NJ 07014  
 Tel: 973-773-8400  
 Fax: 973-773-8442  
 email: [apf@associatedpile.com](mailto:apf@associatedpile.com)  
[www.associatedpile.com](http://www.associatedpile.com)  
 Call Toll Free: 800-526-9047

# INSIDE CUTTING SHOE

## CS7742

**MATERIAL: CAST STEEL**  
 ASTM A148 90/60 Heat Treated  
 Normal foundry tolerences apply



OD	A	B	C	D	E
42"	42"	39 5/8"	38 5/8"	3/4"	2 1/2"

F	G	H	J	wt
3 1/4"	1/2"	1 1/8"	3/8"	140#

### ***Attachment Procedure***

1. Hold cutting shoe in close contact with the end of pile.
2. Place a 5/16" partial penetration single-bevel groove weld along the entire circumference of the pile/shoe interface utilizing an E70XX welding rod or equivalent filler material.



**ASSOCIATED PILE  
& FITTING**

45 Samworth Road, Clifton, NJ 07014  
 Tel: 973-773-8400  
 Fax: 973-773-8442  
 email: [apf@associatedpile.com](mailto:apf@associatedpile.com)  
[www.associatedpile.com](http://www.associatedpile.com)  
 Call Toll Free: 800-526-9047