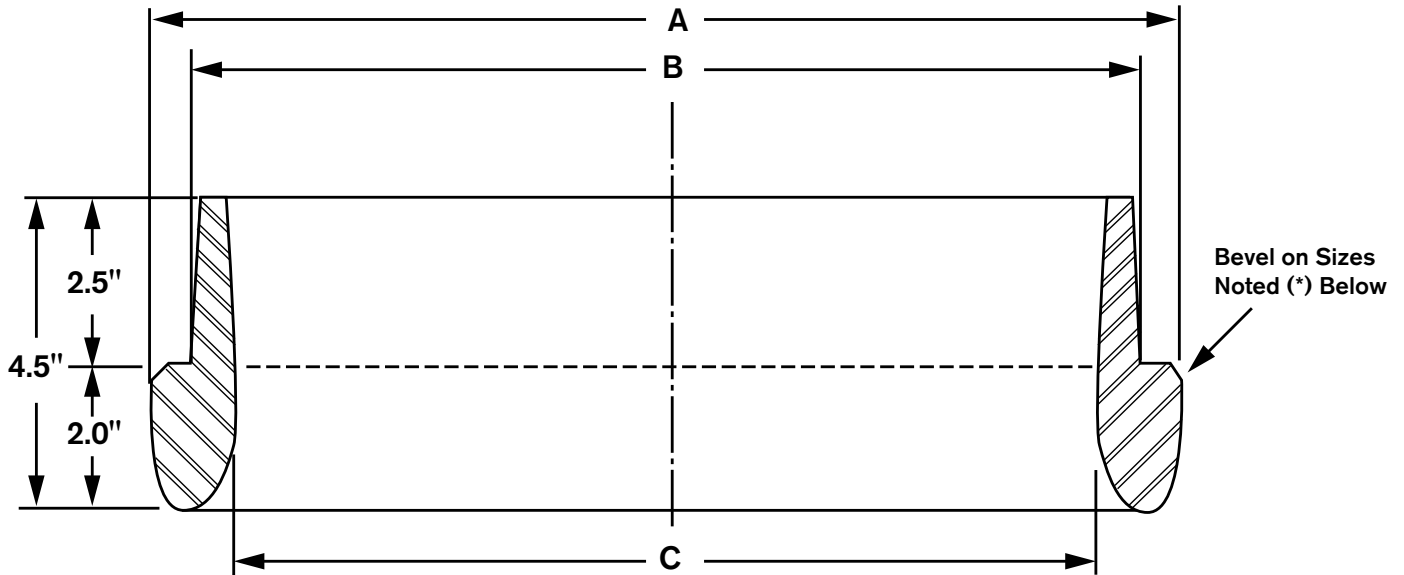


# INSIDE CUTTING SHOE

## O-14001



**MATERIAL: CAST STEEL**  
 ASTM A148 90/60 Heat Treated  
 Normal foundry tolerances apply

PIPE OD	A	B	C
10-3/4"	10-7/8"	9-3/4"	8-5/8"
12-3/4"	12-7/8"	11-3/4"	10-5/8"
16"*	16"	14-3/8"	13-3/8"
20"*	20-1/8"	18-1/8"	17-3/8"
24"*	24-1/4"	22-1/4"	21-5/8"

### Attachment Procedure

1. Hold cutting shoe in close contact with the end of pile.
2. Place a 5/16" partial penetration single-bevel groove weld along the entire circumference of the pile/shoe interface utilizing an E70XX welding rod.



**ASSOCIATED PILE  
& FITTING**

45 Samworth Road, Clifton, NJ 07014  
 Tel: 973-773-8400  
 Fax: 973-773-8442  
 email: apf@associatedpile.com  
 www.associatedpile.com  
 Call Toll Free: 800-526-9047