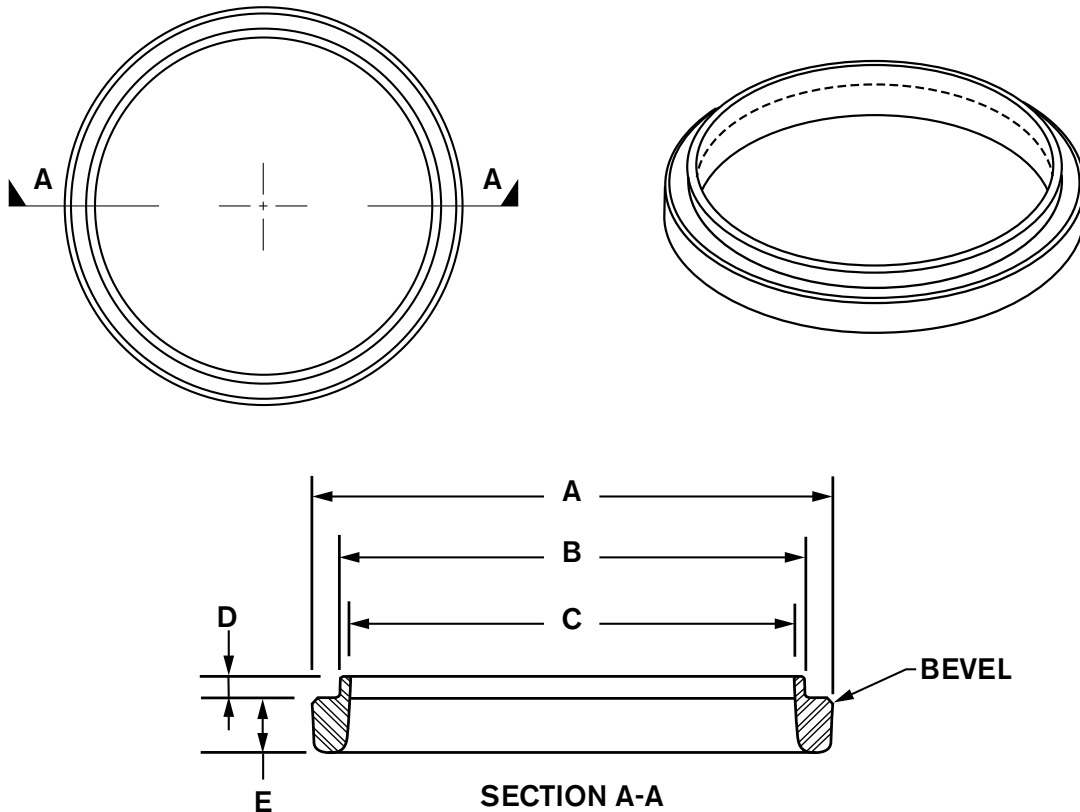


# INSIDE CUTTING SHOE

## VB709.625

**MATERIAL: CAST STEEL**  
 ASTM A148 90/60 Heat Treated  
 Normal foundry tolerences apply



OD	A	B	C	D	E	wt
9 5/8"	9 5/8"	7 15/16"	7 1/4"	7/16"	1 15/16"	16#

### **Attachment Procedure**

1. Hold cutting shoe in close contact with the end of pile.
2. Place a 5/16" partial penetration single-bevel groove weld along the entire circumference of the pile/shoe interface utilizing an E70XX welding rod or equivalent filler material.



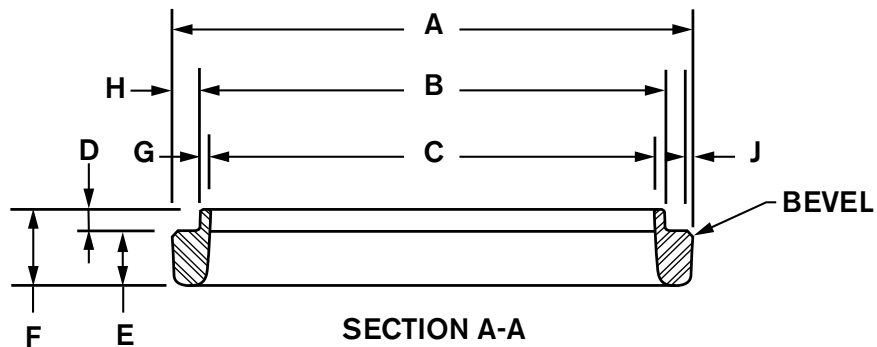
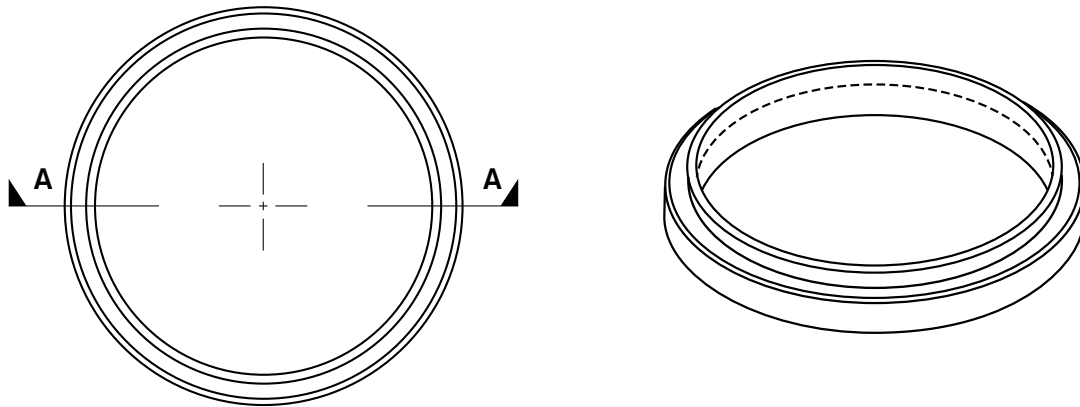
**ASSOCIATED PILE  
& FITTING**

45 Samworth Road, Clifton, NJ 07014  
 Tel: 973-773-8400  
 Fax: 973-773-8442  
 email: [apf@associatedpile.com](mailto:apf@associatedpile.com)  
[www.associatedpile.com](http://www.associatedpile.com)  
 Call Toll Free: 800-526-9047

# INSIDE CUTTING SHOE

## VB714

**MATERIAL: CAST STEEL**  
 ASTM A148 90/60 Heat Treated  
 Normal foundry tolerences apply



OD	A	B	C	D	E
14"	14"	12 3/4"	11 3/4"	3/4"	2"

F	G	H	J	wt
2 3/4"	1/2"	5/8"	3/8"	27#

### ***Attachment Procedure***

1. Hold cutting shoe in close contact with the end of pile.
2. Place a 5/16" partial penetration single-bevel groove weld along the entire circumference of the pile/shoe interface utilizing an E70XX welding rod or equivalent filler material.



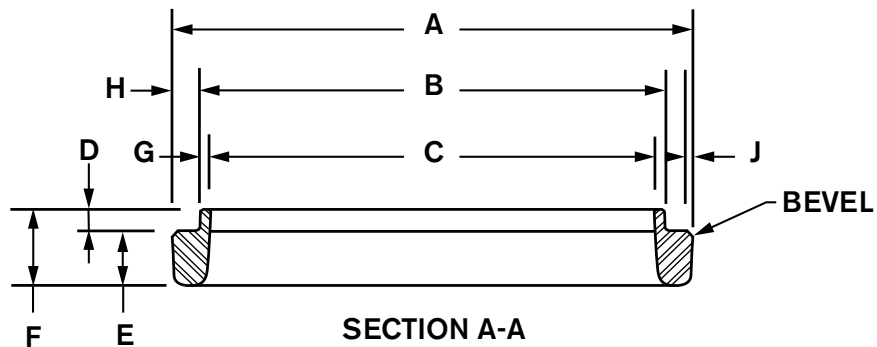
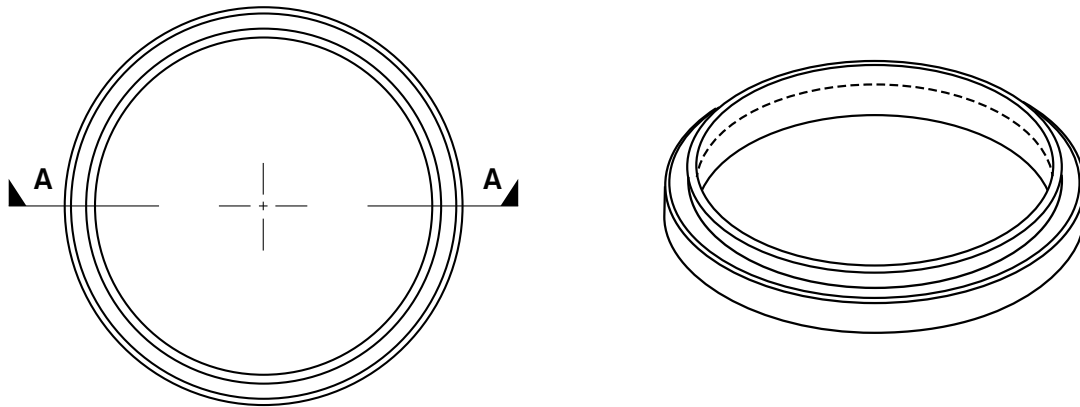
**ASSOCIATED PILE  
& FITTING**

45 Samworth Road, Clifton, NJ 07014  
 Tel: 973-773-8400  
 Fax: 973-773-8442  
 email: [apf@associatedpile.com](mailto:apf@associatedpile.com)  
[www.associatedpile.com](http://www.associatedpile.com)  
 Call Toll Free: 800-526-9047

# INSIDE CUTTING SHOE

## VB718

**MATERIAL: CAST STEEL**  
 ASTM A148 90/60 Heat Treated  
 Normal foundry tolerences apply



OD	A	B	C	D	E
18"	18"	16 1/2"	15 1/2"	3/4"	2"

F	G	H	J	wt
2 3/4"	1/2"	3/4"	3/8"	42#

### ***Attachment Procedure***

1. Hold cutting shoe in close contact with the end of pile.
2. Place a 5/16" partial penetration single-bevel groove weld along the entire circumference of the pile/shoe interface utilizing an E70XX welding rod or equivalent filler material.



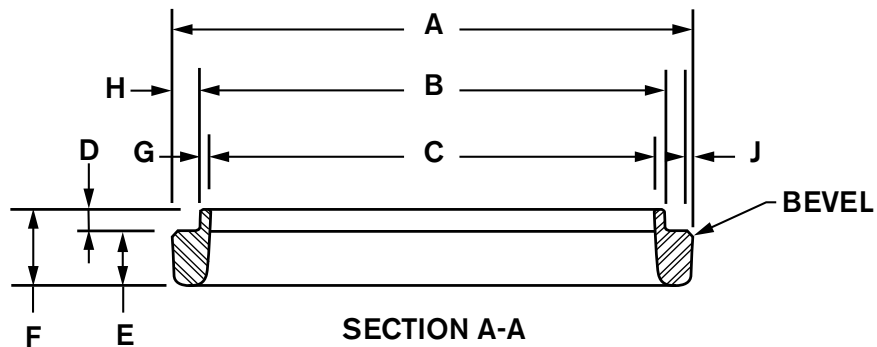
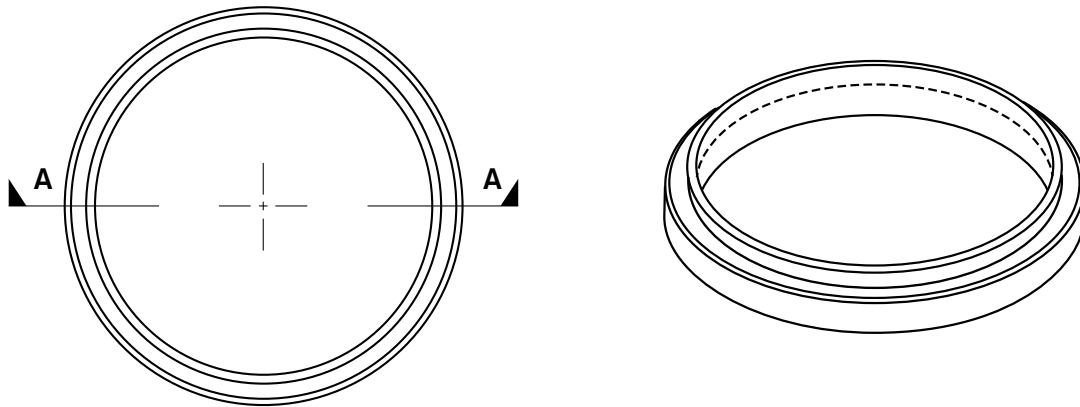
**ASSOCIATED PILE  
& FITTING**

45 Samworth Road, Clifton, NJ 07014  
 Tel: 973-773-8400  
 Fax: 973-773-8442  
 email: [apf@associatedpile.com](mailto:apf@associatedpile.com)  
[www.associatedpile.com](http://www.associatedpile.com)  
 Call Toll Free: 800-526-9047

# INSIDE CUTTING SHOE

## VB736-1.25

**MATERIAL: CAST STEEL**  
 ASTM A148 90/60 Heat Treated  
 Normal foundry tolerences apply



OD	A	B	C	D	E
36"	36"	33 1/4"	32 3/4"	3/4"	2 1/2"

F	G	H	J	wt
3 1/2"	1/4"	1 3/8"	3/8"	110#

### ***Attachment Procedure***

1. Hold cutting shoe in close contact with the end of pile.
2. Place a 5/16" partial penetration single-bevel groove weld along the entire circumference of the pile/shoe interface utilizing an E70XX welding rod or equivalent filler material.



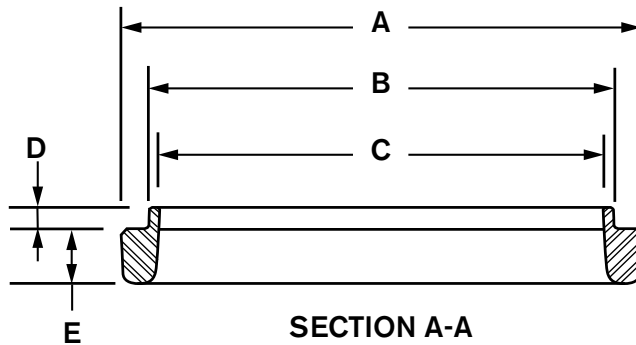
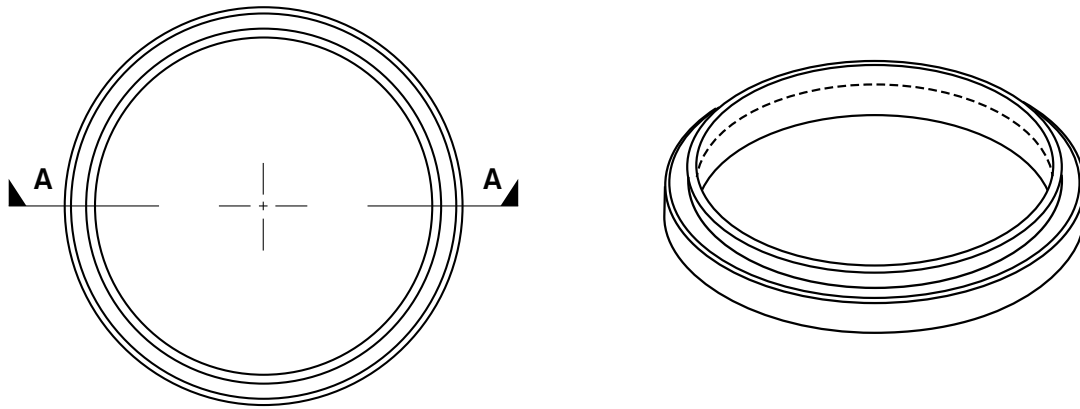
**ASSOCIATED PILE  
& FITTING**

45 Samworth Road, Clifton, NJ 07014  
 Tel: 973-773-8400  
 Fax: 973-773-8442  
 email: [apf@associatedpile.com](mailto:apf@associatedpile.com)  
[www.associatedpile.com](http://www.associatedpile.com)  
 Call Toll Free: 800-526-9047

# INSIDE CUTTING SHOE

## VB748NB (No Bevel)

**MATERIAL: CAST STEEL**  
 ASTM A148 90/60 Heat Treated  
 Normal foundry tolerences apply



OD	A	B	C	D	E	wt
48"	48"	45 3/4"	45 3/16"	7/16"	3"	195#

### **Attachment Procedure**

1. Hold cutting shoe in close contact with the end of pile.
2. Place a 5/16" partial penetration single-bevel groove weld along the entire circumference of the pile/shoe interface utilizing an E70XX welding rod or equivalent filler material.



**ASSOCIATED PILE  
& FITTING**

45 Samworth Road, Clifton, NJ 07014  
 Tel: 973-773-8400  
 Fax: 973-773-8442  
 email: [apf@associatedpile.com](mailto:apf@associatedpile.com)  
[www.associatedpile.com](http://www.associatedpile.com)  
 Call Toll Free: 800-526-9047